



**INVEST-TECH**

**STAINLESS STEEL STOCK AND SERVICE**

# ABOUT INVEST-TECH



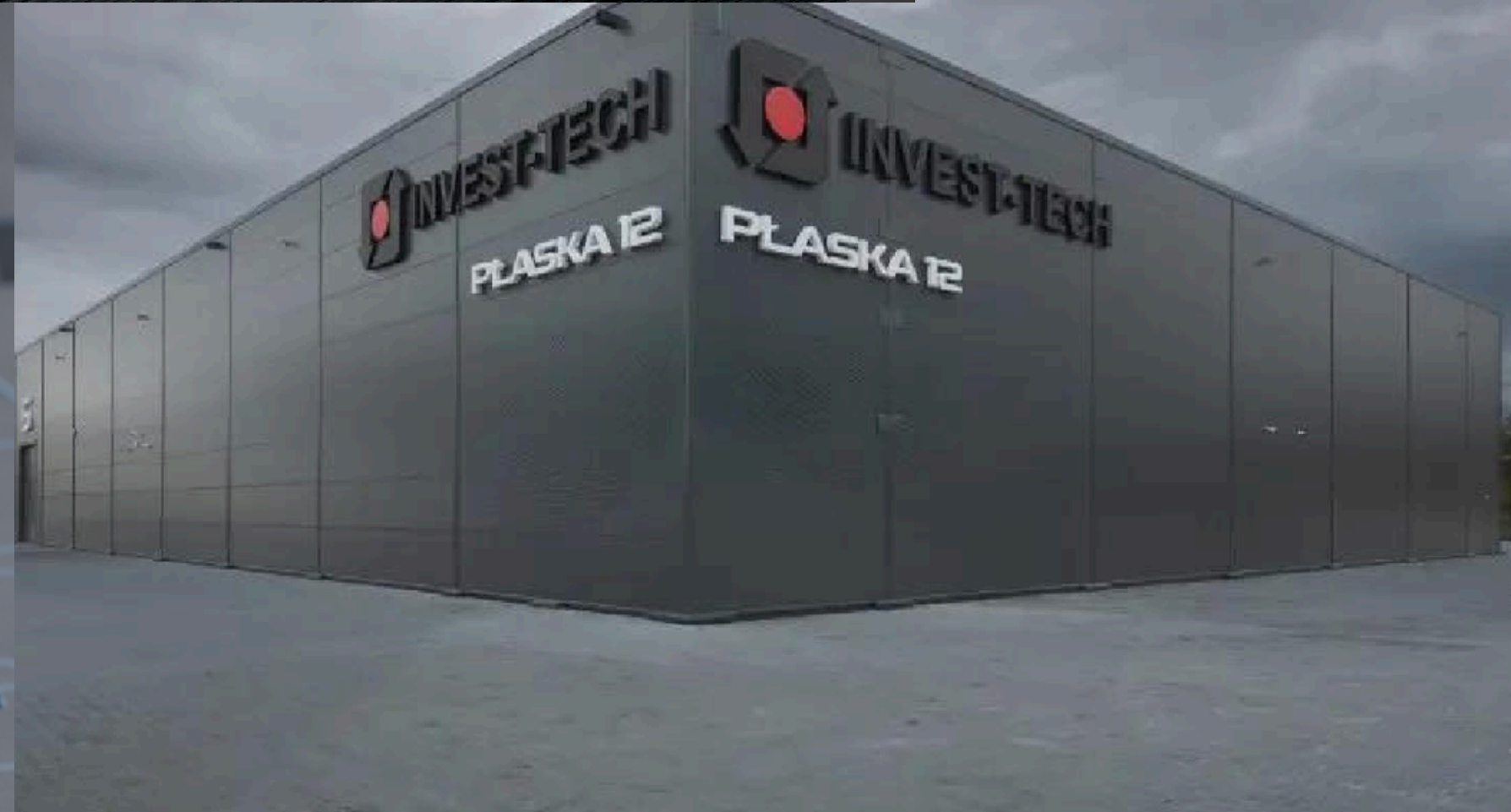
- Industry leader in stainless steel cutting
- Many years of experience
- Professional and experienced team
- Comprehensive range of products and services
- Located in Central Poland
- Order and delivery completion
- Excellent commercial terms
- Worldwide delivery

1.4301 1.4307 1.4541 1.4404 1.4571 1.4828 1.4547 1.4841 1.4462 1.4539 1.4410





# HEADQUARTERS



# NEARLY 30 YEARS IN THE STAINLESS STEEL INDUSTRY

INVEST-TECH SP Z O.O.



1996

2004

NEW INVESTMENT  
PŁASKA 12  
COMMENCEMENT  
OF PRODUCTION

HEADQUARTERS  
PRODUCTION HALL  
WAREHOUSE  
4,000 M<sup>2</sup>

2010

2014

WATERJET, PLASMA  
AND LASER CUTTING

2017

INTERNATIONAL MARKET  
EXPANSION  
EXPORT DIVISION

2023

NEW LOGISTICS &  
DISTRIBUTION CENTER -  
INVEST-TECH, PŁASKA 12  
TOTAL SPACE: 8,000 M<sup>2</sup>

2024

LASERS WITH 20 kW  
POWER OUTPUT

1.4301

1.4307

1.4541

1.4404

1.4571

1.4828

1.4547

1.4841

1.4462

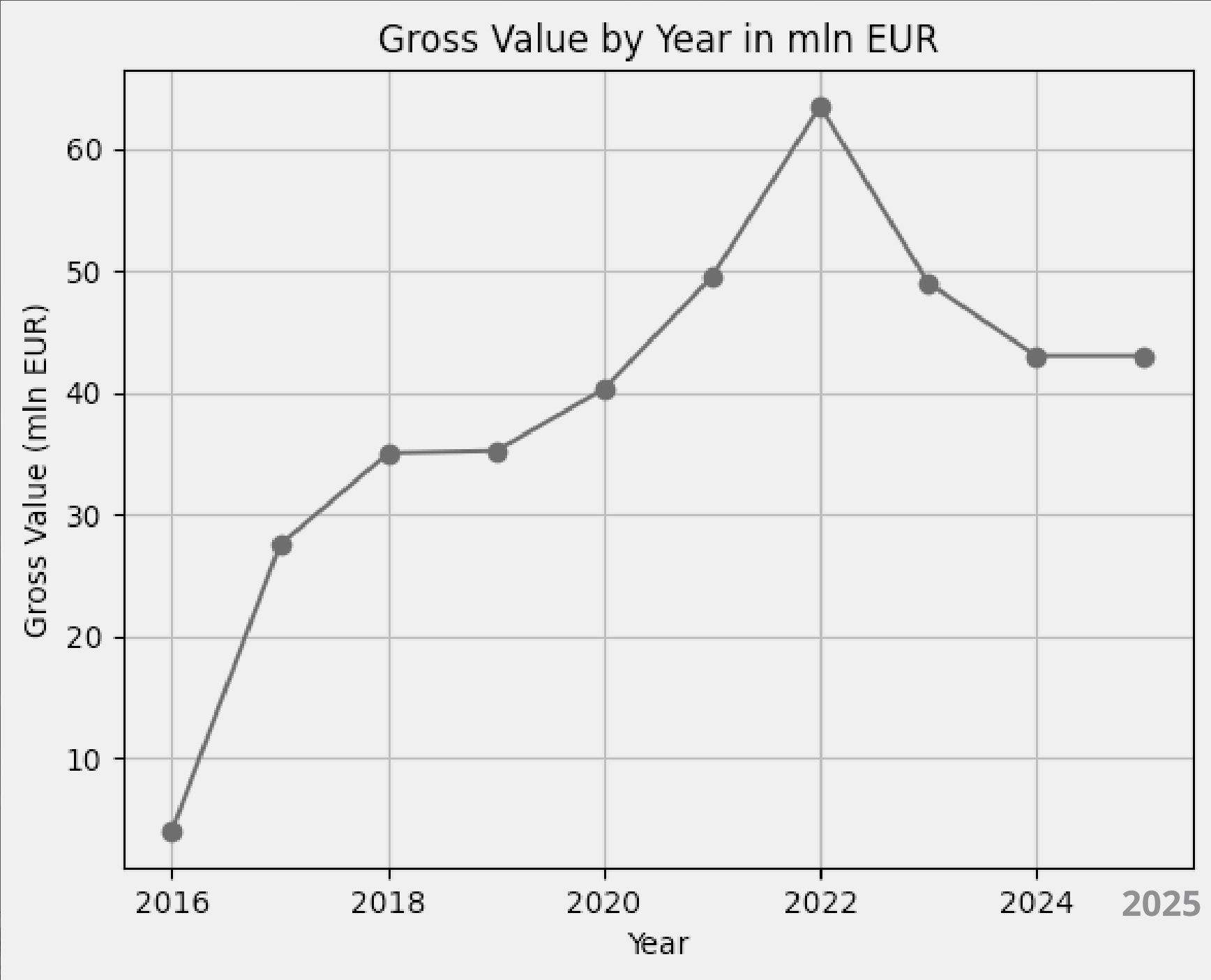
1.4539

1.4410



INVEST-TECH

# COMPANY GROWTH IN MILLION EUR



1.4301 1.4307 1.4541 1.4404 1.4571 1.4828 1.4547 1.4841 1.4462 1.4539 1.4410



INVEST-TECH

# TOTAL NUMBER OF EMPLOYEES



125

2025

1.4301 1.4307 1.4541 1.4404 1.4571 1.4828 1,4547 1,4841 1,4462 1.4539 1.4410



INVEST-TECH

# SHEETS, FLANGES, PIPES, CUT COMPONENTS AND SPECIAL PARTS



1.4301 1.4307 1.4541 1.4404 1.4571 1.4828 1.4547 1.4841 1.4462 1.4539 1.4410



INVEST-TECH

# STAINLESS STEEL SHEET STOCK – PRODUCTION RANGE

## AUSTENITIC GRADES

1.4301/1.4307/304/304L  
1.4401/1.4404/316/316L

1.4541/321L  
1.4571/316TI

1.4547/254SMO

## AUSTENITIC HEAT-RESISTANT GRADES

1.4828/309  
1.4841/314

1.4845/310S  
1.4878/321H

1.4835/253MA

## SUPER AUSTENITIC GRADES

1.4539/904L

## DUPLEX GRADES

1.4162/LDX 2101  
1.4362/2304

1.4462/2205

## SUPER DUPLEX GRADES

1.4410/2507

SHEET

1000 x 2000 2000 x 2000 2000 x 3000 2000 x 4000 2000 x 6000 2500 x 6000

THICKNESS

3-90 MM

RANGES



INVEST-TECH

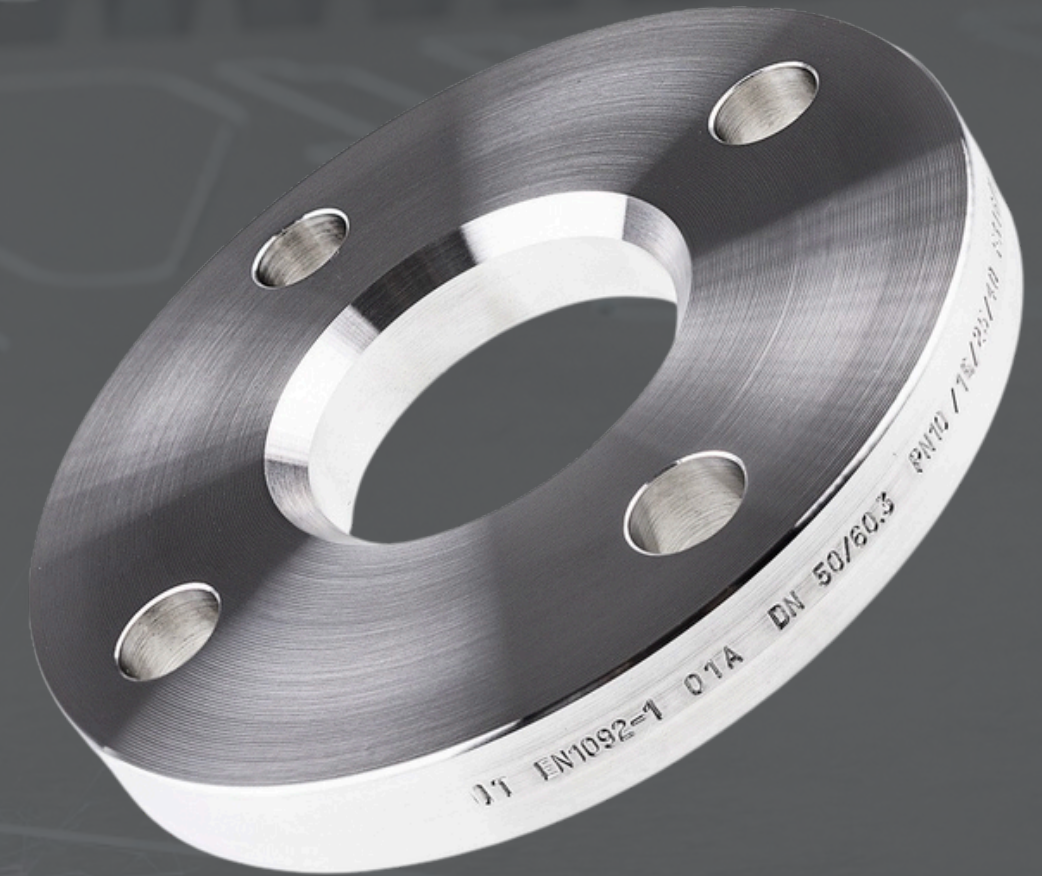
# FLANGES, SPECIAL COMPONENTS - CNC MACHINING

## DUPLEX SUPERDUPLEX, AUSTENITIC GRADES

1.4307/304L 1.4404/316L 1.4841/310 1.4541/321  
1.4878/321H 1.4841/310 1.4571/316TI 1.4547/254SMO  
1.4462/LDX 2205 1.4410/LDX 2507 1.4828/309

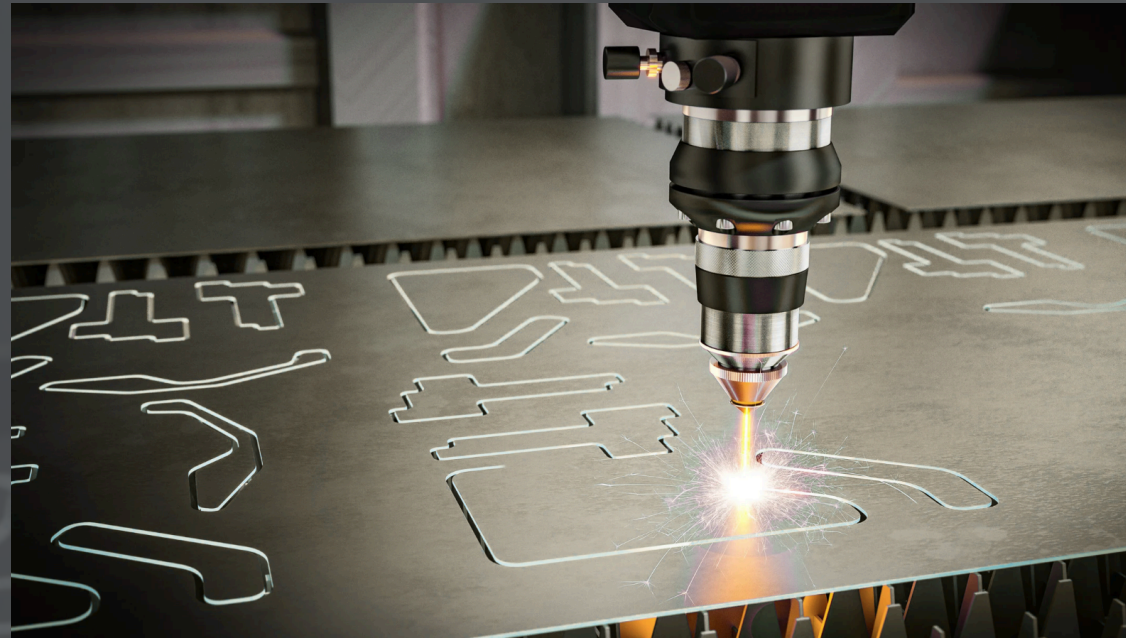
DIAMETER UP TO DN  
2200 IN ACCORDANCE  
WITH EN 10205-5 AND  
EN 1092-1 STANDARDS

IN ACCORDANCE WITH ANSI STANDARDS



1.4301 1.4307 1.4541 1.4404 1.4571 1.4828 1.4547 1.4841 1.4462 1.4539 1.4410

# LASER CUTTING, ABRASIVE CUTTING, PLASMA CUTTING, BENDING, WELDING



1.4301

1.4307

1.4541

1.4404

1.4571

1.4828

1.4547

1.4841

1.4462

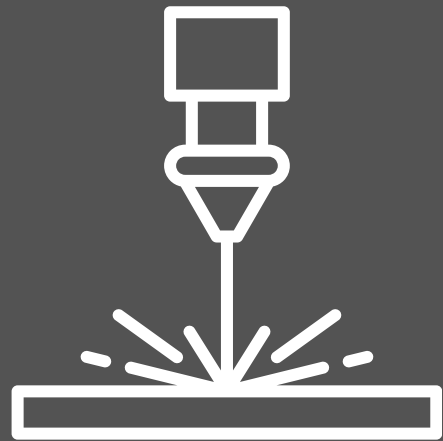
1.4539

1.4410



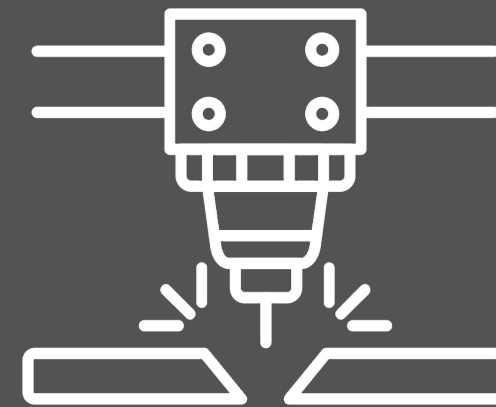
INVEST-TECH

# STAINLESS STEEL CUTTING AT INVEST-TECH



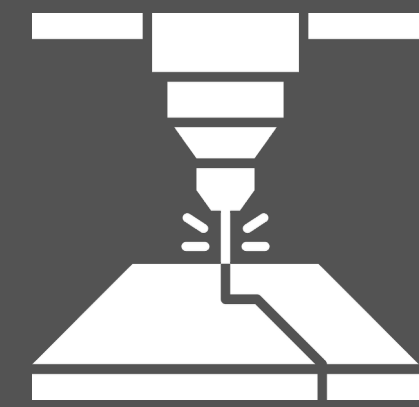
**LASER CUTTING**

**MAXIMUM SHEET SIZE 2,500 × 6,000 MM**  
**MAXIMUM SHEET THICKNESS: 40 MM**



**PLASMA CUTTING**

**MAXIMUM SHEET SIZE 22,500 × 6,000 MM**  
**MAXIMUM SHEET THICKNESS: 100 MM**



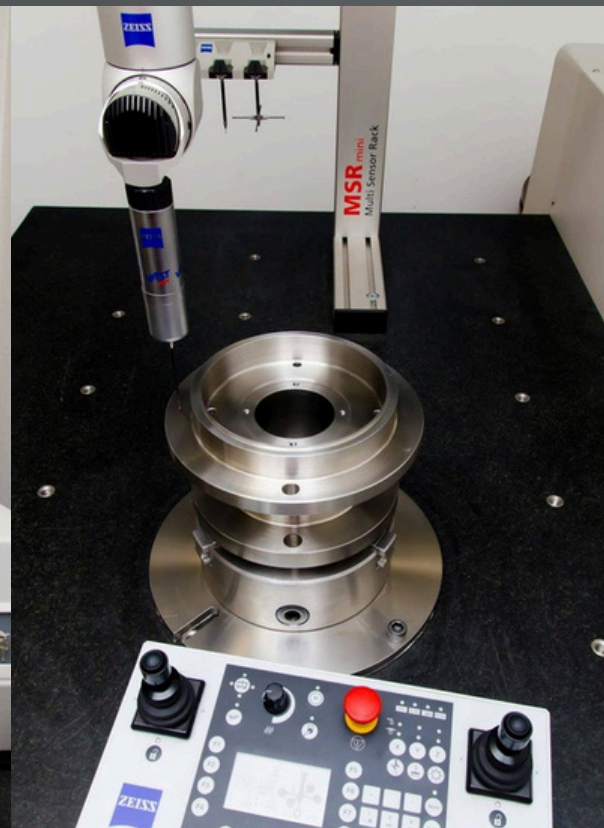
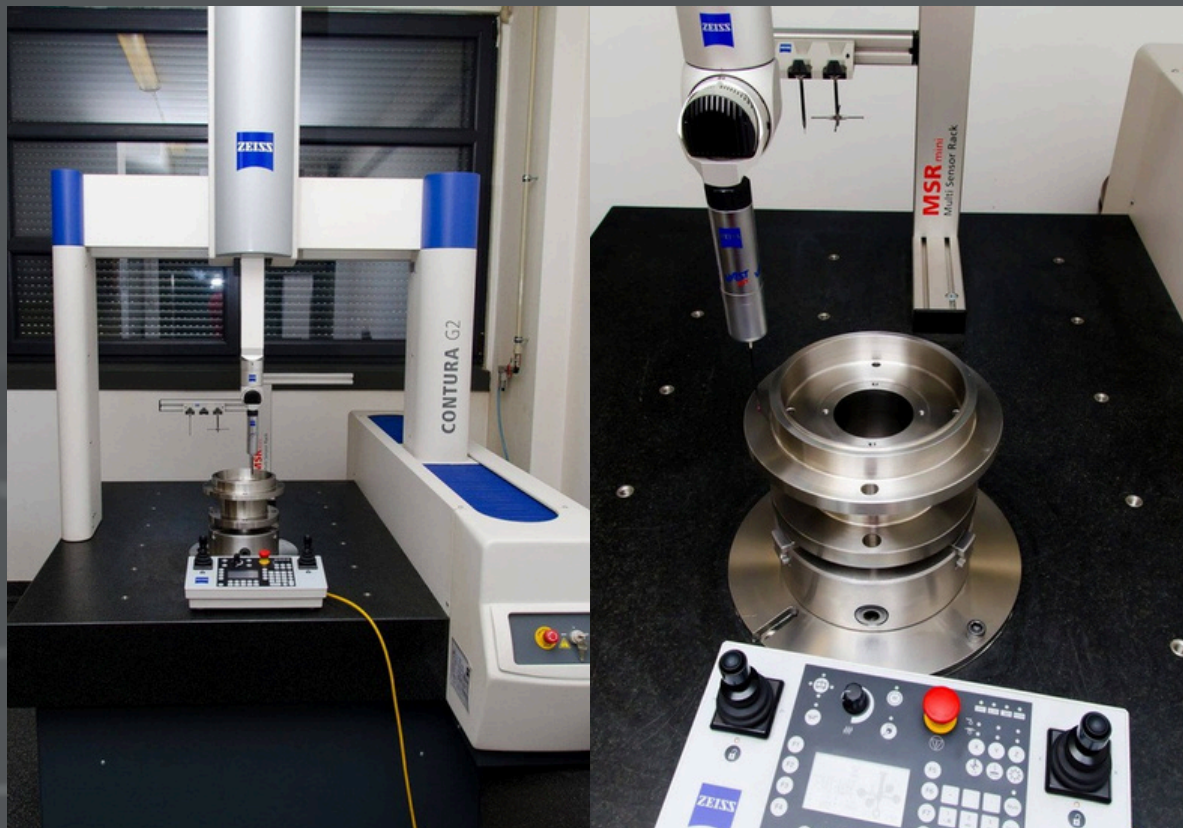
**WATERJET CUTTING**

**MAXIMUM SHEET SIZE 2,000 × 6,000 MM**  
**MAXIMUM SHEET THICKNESS: 254 MM**

1.4301 1.4307 1.4541 1.4404 1.4571 1.4828 1.4547 1.4841 1.4462 1.4539 1.4410



# QUALITY CONTROL DEPARTMENT



Invest-Tech products hold international certifications and are manufactured in compliance with ISO standards.

Invest-Tech ensures a high standard of its products by implementing rigorous quality control procedures.

**ZEISS CONTURA G2 COORDINATE MEASURING MACHINE**

**MITUTOYO SJ-210 SURFACE ROUGHNESS TESTER**

**X-RAY SPECTROMETER – OXFORD X-MET 7000 eXpress**

**OLYMPUS EPOCH 600 ULTRASONIC FLAW DETECTOR**

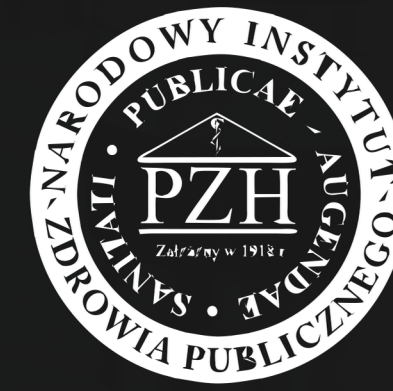
**OTHER HANDHELD MEASURING EQUIPMENT**

1.4301 1.4307 1.4541 1.4404 1.4571 1.4828 1.4547 1.4841 1.4462 1.4539 1.4410



**INVEST-TECH**

## CERTIFICATES



1.4301

1.4307

1.4541

1.4404

1.4571

1.4828

1.4547

1.4841

1.4462

1.4539

1.4410



INVEST-TECH

# WE SUPPLY OUR PRODUCTS WORLDWIDE



1.4301 1.4307 1.4541 1.4404 1.4571 1.4828 1,4547 1,4841 1,4462 1.4539 1.4410



# INVEST-TECH – MEMBER OF THE SSN ASSOCIATION



**Invest-Tech is a member of the Polish Stainless Steel Association (SSN), whose mission is to promote and educate about stainless steel products.**

1.4301 1.4307 1.4541 1.4404 1.4571 1.4828 1.4547 1.4841 1.4462 1.4539 1.4410





**INVEST-TECH**

[export@invest-tech.pl](mailto:export@invest-tech.pl)  
[www.invest-tech.eu](http://www.invest-tech.eu)